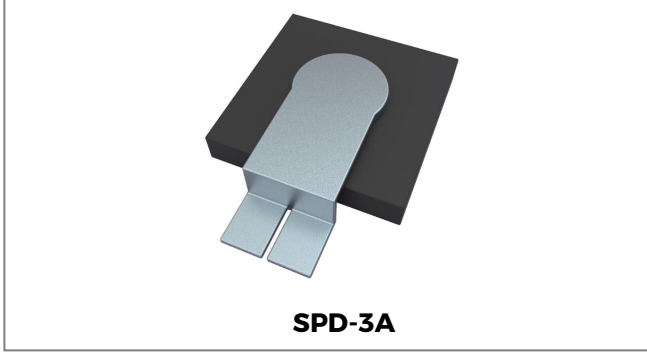


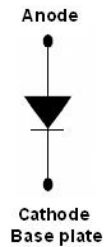
## TPK07KP48-I TVS Rectifier



### Features

- Low profile surface mount
- Unidirectional
- Fast response
- Suppresses transients up to 7000W @ 10/1000 $\mu$ s
- Marking : body marked with TPK07KP48
- This is a Pb - Free Device
- Open top for heat dissipation and different connection options
- All SMC parts are traceable to the wafer lot
- All part are 100% tested: electrical, 1x surge test, visual inspection
- Additional testing can be offered upon request

### Schematic & Pin Configuration



### Applications

- Protection from switching transients and induced RF

### Maximum Ratings@T<sub>A</sub>=25°C unless otherwise specified

Characteristic	Symbol	Value	Unit
Junction and Storage Temperature Range	T <sub>J</sub> , T <sub>STG</sub>	-55 to +175	°C
Thermal Resistance Junction to Case	R <sub>θJC</sub>	0.9	°C/W
Peak Pulse Power (with 10/1000 $\mu$ s waveform)	P <sub>PPM</sub>	7000	W
Maximum Forward Voltage @ 1000A	V <sub>F</sub>	2	V
Forward Surge Current (8.3 ms single half sine-wave)	I <sub>FSM</sub>	700	A
Power dissipation on infinite heatsink	P <sub>D</sub>	8.0	W

**Electrical Characteristics@T<sub>A</sub>=25°C unless otherwise specified**

Part Number	Nom. Stand-off Voltage V <sub>wm</sub> (V)	Breakdown Voltage V <sub>BR</sub> @ I <sub>T</sub> (V)		Test Current I <sub>T</sub> (mA)	Max. Clamping Voltage V <sub>c</sub> (10/1000μs) @ I <sub>PP</sub> (V)	Max. Reverse Leakage Current I <sub>R</sub> @ V <sub>wm</sub> (μA)	Peak Pulse Current I <sub>PP</sub> @10/1000μs Waveform (A)
		Min.	Max.				
TPK07KP48-I	48	58	65.1	5	85.5	10	81.9

**Ratings and Characteristics Curves**

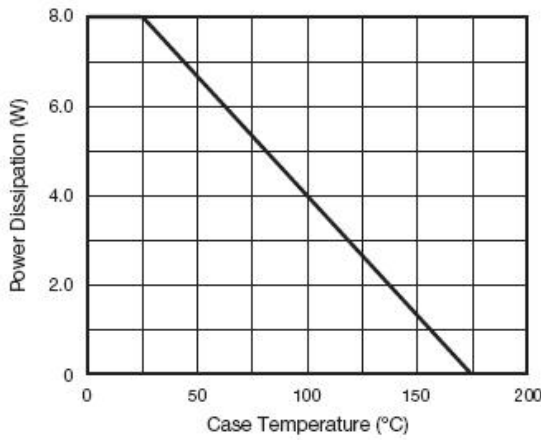


Fig. 1 - Power Derating Curve

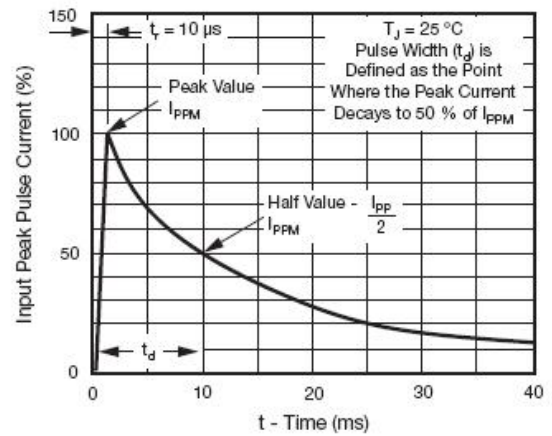


Fig. 3 - Pulse Waveform

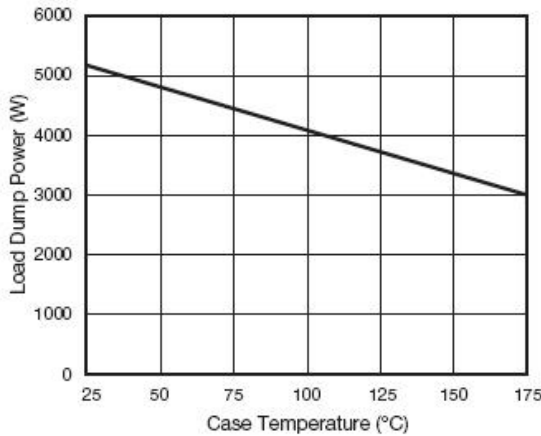


Fig. 2 - Load Dump Power Characteristics (10 ms Exponential Waveform)

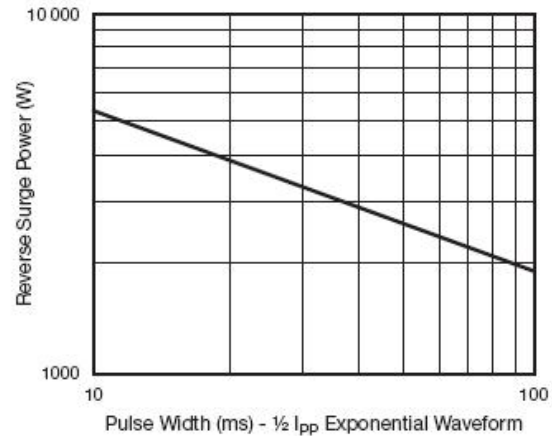
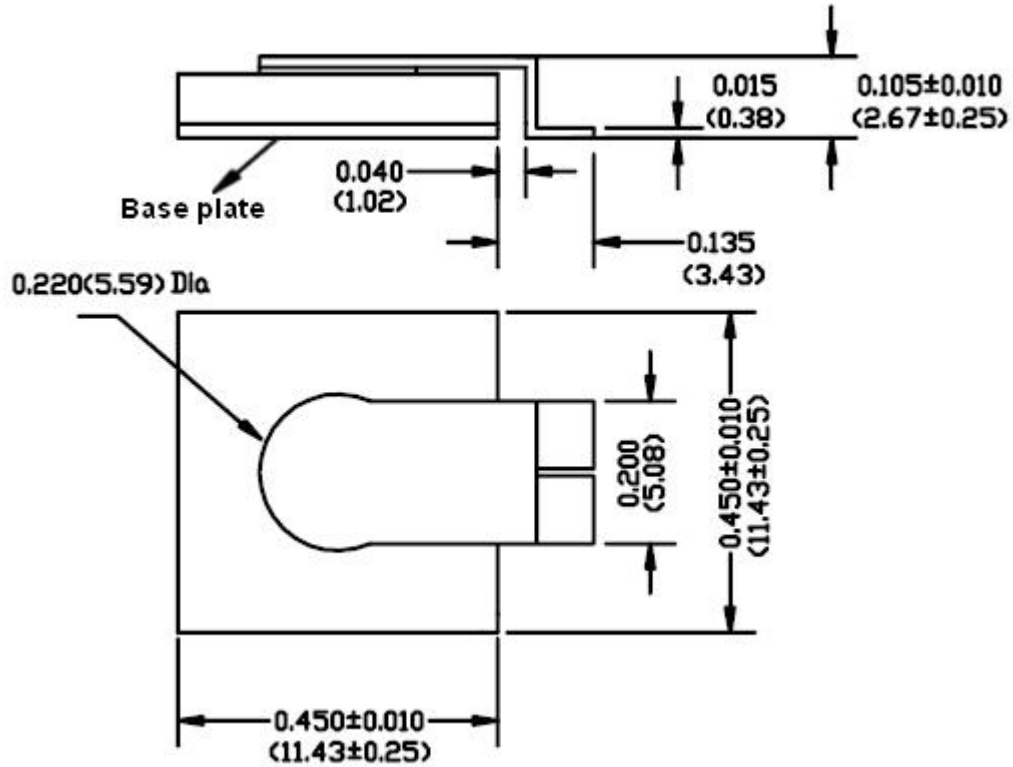


Fig. 4 - Reverse Power Capability

**Mechanical Dimensions (Inches/Millimeters)**



**Ordering Information**

Device	Package	Shipping
TPK07KP48-I	SPD-3A(Pb-Free)	100pcs/ box

For information on tape and reel specifications, including part orientation and tape sizes, please refer to our tape and reel packaging specification.

**DISCLAIMER:**

- 1- The information given herein, including the specifications and dimensions, is subject to change without prior notice to improve product characteristics. Before ordering, purchasers are advised to contact the SMC Diode Solutions sales department for the latest version of the datasheet(s).
- 2- In cases where extremely high reliability is required (such as use in nuclear power control, aerospace and aviation, traffic equipment, medical equipment, and safety equipment), safety should be ensured by using semiconductor devices that feature assured safety or by means of users' fail-safe precautions or other arrangement.
- 3- In no event shall SMC Diode Solutions be liable for any damages that may result from an accident or any other cause during operation of the user's units according to the datasheet(s). SMC Diode Solution assumes no responsibility for any intellectual property claims or any other problems that may result from applications of information, products or circuits described in the datasheets.
- 4- In no event shall SMC Diode Solutions be liable for any failure in a semiconductor device or any secondary damage resulting from use at a value exceeding the absolute maximum rating.
- 5- No license is granted by the datasheet(s) under any patents or other rights of any third party or SMC Diode Solutions.
- 6- The datasheet(s) may not be reproduced or duplicated, in any form, in whole or part, without the expressed written permission of SMC Diode Solutions.
- 7- The products (technologies) described in the datasheet(s) are not to be provided to any party whose purpose in their application will hinder maintenance of international peace and safety nor are they to be applied to that purpose by their direct purchasers or any third party. When exporting these products (technologies), the necessary procedures are to be taken in accordance with related laws and regulations..